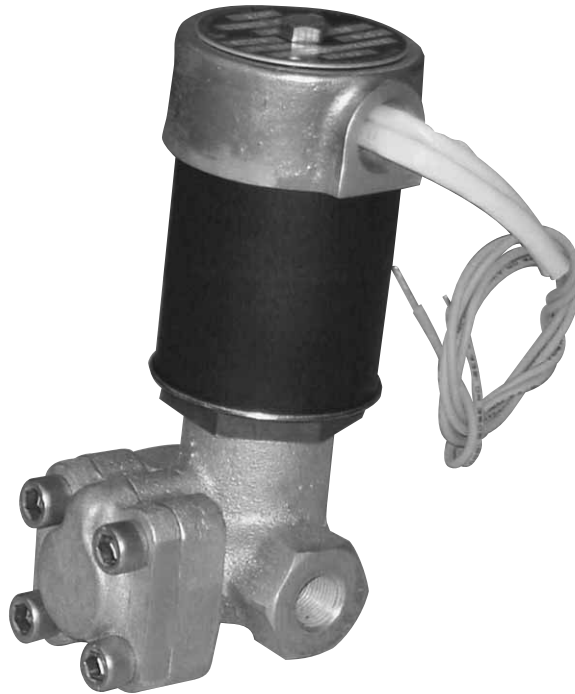


ATKOMATIC

12000 Series

Bronze, Pilot-piston, Pressure 5 to 3000 psig (0.4 to 207 bar)
High Pressure Valve Configurable for Variety of Fluid Applications



Features

- Pressures to 3000 psig (207 bar)
- Fluid temperatures from -423°F to $+400^{\circ}\text{F}$ (-54°C to $+204^{\circ}\text{C}$)
- For use with any gas or liquid (max. viscosity of 150 SSU) including steam, that is not harmful to bronze
- Pipe sizes of $\frac{3}{8}$ " through 1" (British BSPT ports available)
- Full ported valve, Cv from 2.8 to 8.9
- Pilot operated: require a minimum pressure differential of 5 psig
- Optional pilot seat materials of Teflon®, PCTFE, or 440 stainless steel
- Optional piston seat materials of Teflon®, PCTFE, Buna N, Viton®, or EPR depending on fluid type and pressure
- Body seal materials of Viton®, Buna N, EPR, or Kalrez®
- Bronze valve material (naval M bronze)
- Removable 316 stainless steel body inserts (stainless steel trim)
- Coil housings available in NEMA 1 (standard), NEMA 4 (waterproof), NEMA 7 (explosion-proof for hazardous locations), and combination NEMA 4 & 7
- Manual opening device is available as an option
- Class B coils are available for media temperatures of 0°F through $+220^{\circ}\text{F}$
- Class H coils are available: recommended for media temperatures of -423°F through $+400^{\circ}\text{F}$ (-54°C to $+204^{\circ}\text{C}$)
- Can be mounted in any orientation
- Compact size and relatively low current draw with AC coils
- Treated 416 stainless steel plunger material for increased corrosion resistance

Operational Pressures (5 psi minimum pressure differential)

GASES		LIQUIDS TO 40 SUS		LIQUIDS OVER 40 SUS		STEAM	
AC	DC	AC	DC	AC	DC	AC	DC
3000 / 207 bar	3000 / 207 bar	3000 / 207 bar	3000 / 207 bar	3000 / 207 bar	3000 / 207 bar	3000 / 207 bar	3000 / 207 bar

Note: Buna N, Viton® and EPR seats are limited to 500 psig (34.5 barg).

Circle Seal Controls

2301 Wardlow Circle • P.O. Box 3300 • Corona, CA 92880

Phone (951) 270-6200 Fax (951) 270-6201

www.circlesealcontrols.com • am_sales@circlesealcontrols.com • ind_sales@circlesealcontrols.com

atkomatic solenoid

12000 Series

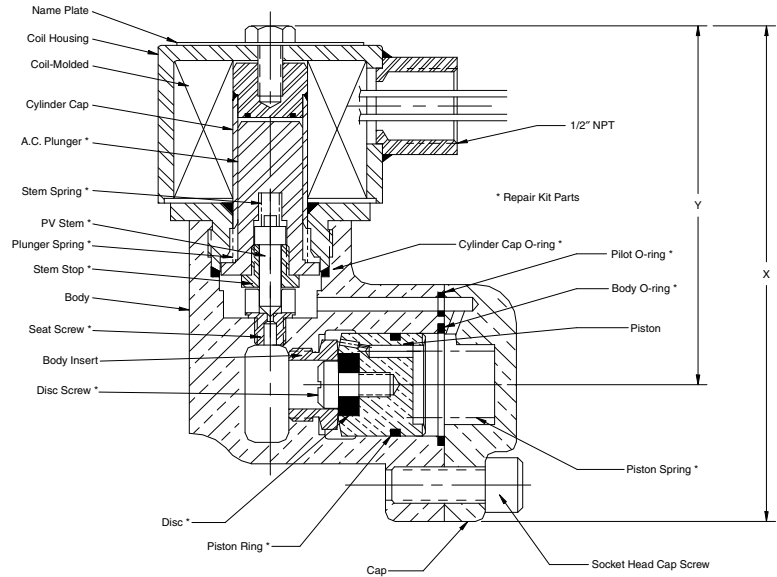
Dimensions, Shipping Weights, and Cv Flow Factors

12000 Series AC

CATALOG NUM. PREFIX	PIPE SIZE	MAIN SEAT ORIFICE	X	Y	Z	SHIPPING WEIGHT (lbs)	Cv
12410	3/8"	1/2"	3 3/4"	4 3/4"	3 1/4"	6	2.8
12420	1/2"	1/2"	3 3/4"	4 3/4"	3 1/4"	6	4.2
12430	3/4"	1"	4 7/8"	6"	4 3/4"	11	8.5
12440	1"	1"	4 7/8"	6"	4 3/4"	11	8.9

12000 Series DC

CATALOG NUM. PREFIX	PIPE SIZE	MAIN SEAT ORIFICE	X	Y	Z	SHIPPING WEIGHT (lbs)	Cv
12410	3/8"	1/2"	7"	6"	3 1/4"	8	2.8
12420	1/2"	1/2"	7"	6"	3 1/4"	8	4.2
12430	3/4"	1"	8 1/4"	6 3/8"	4 3/4"	13	8.5
12440	1"	1"	8 1/4"	6 3/8"	4 3/4"	13	8.9



12410 3/8" Valve, shown with a NEMA 7 explosion-proof coil housing & AC coil

124 *x* **0** - *x x x x x x x x x x x x*

CONNECTION SIZES

1 3/8" 3 3/4"
2 1/2" 4 1"

VOLTAGE AC/60 Hz

0 AC/50Hz or DC voltage
1 100 VAC 3 200 VAC 5 460 VAC
2 115 VAC 4 230 VAC

VOLTAGE AC/50 Hz

0 AC/60 Hz or DC voltage
1 110 VAC 2 220 VAC

VOLTAGE DC

0 AC voltage
1 12 VDC 2 24 VDC 3 125 VDC

COIL INSULATION RATING

B Class B 155° C
H Class H 180° C

CONNECTION TYPE

P NPT
J British pipe thread

MAX. OPERATING PRESSURE (psig)

A 200 E 1,300 I 2,100
B 500 F 1,400 J 2500
C 850 G 1,900 K 3000
D 1000 H 2000

OPTIONS

M Manual opening device

COIL HOUSING

E Explosion-proof
S Standard
W Waterproof
C Combined water- & explosion-proof

FLUID MEDIA TYPE

1 Gas
2 Liquid up to 40 SUS
3 Liquid from 41 SUS to 150 SUS
4 Steam

SEAL MATERIAL

B Buna N C Viton®
D EPR K Kalrez®

SEAT/PILOT MATERIAL

B TFE pilot & Buna N disc
C TFE pilot & Viton® disc
D TFE pilot & EPR disc
E PCTFE pilot & PCTFE disc
F PCTFE pilot & TFE disc
G Metal pilot & TFE disc
H Metal pilot & Buna N disc
I Metal pilot & EPR disc
J Metal pilot & PCTFE disc